

# TINTORETTO - EP068

<b>DESENHO</b>	Maquetado
<b>GRAMATURA ML</b>	510g/ml
<b>GRAMATURA M2</b>	364g/m2
<b>LARGURA</b>	1,40m
<b>PERFORMANCE (GRUPOS)</b>	B
<b>SOLIDEZ DE COR À LUZ</b> NORMA: ISO 105B02 [40H]	Grau superior a 5
<b>RESISTÊNCIA AO PILLING</b> NORMA: ISO 12945-1	Nota 5 - isento
<b>FLAMABILIDADE</b> NORMAS: ISO 6940 E ISO 6941	Auto-extinguível

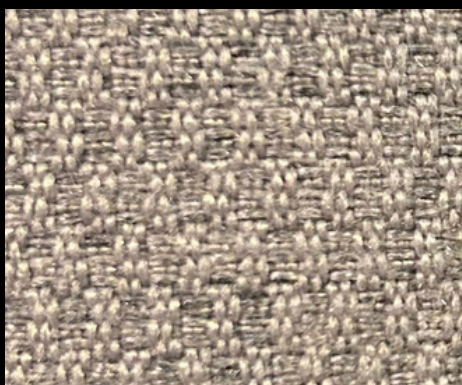
**Tratamentos opcionais:** repelência a água e óleo, fogo retardante, antimicrobial.



**126**



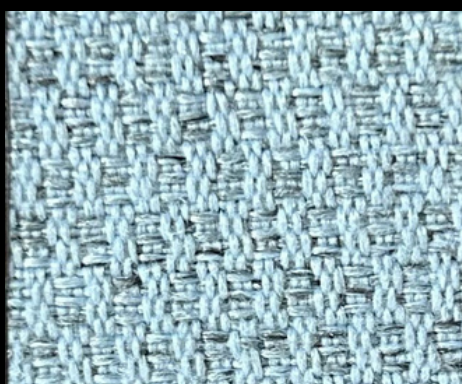
**1802**



**1671**



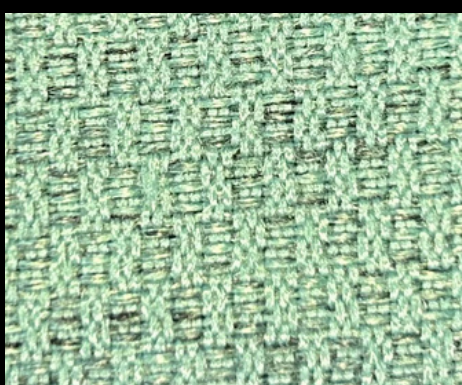
**1865**



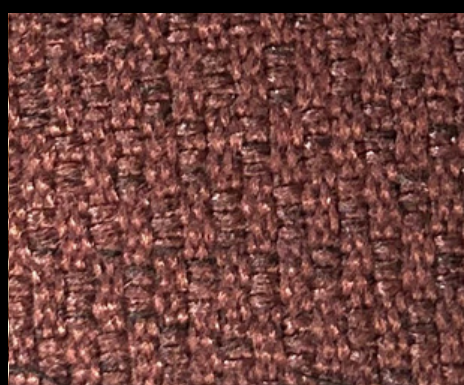
**1131**



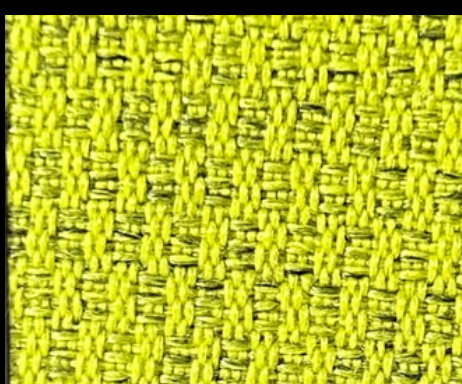
**1867**



**1866**



**1847**



**1862**



**780**

\*Tons podem variar dentro de tolerâncias comerciais