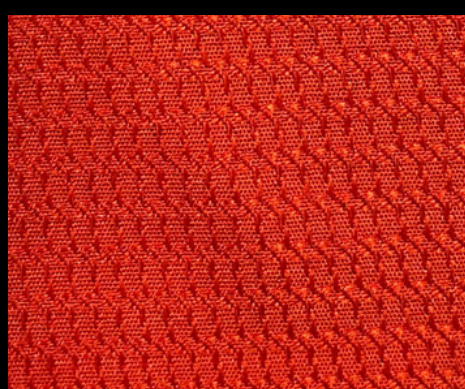


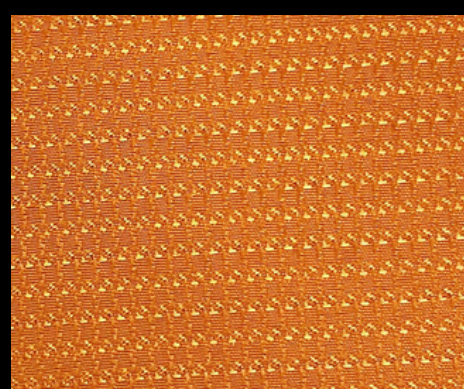
IBERÊ-EPC11

DESENHO	Maquetado
GRAMATURA ML	190g/ml
GRAMATURA M2	158g/m2
LARGURA	1,20m
PERFORMANCE [GRUPOS]	B
SOLIDEZ DE COR À LUZ NORMA: ISO 105B02 [40H]	Grau superior a 5
RESISTÊNCIA AO PILLING NORMA: ISO 12945-1	Nota 5 - isento
FLAMABILIDADE NORMAS: ISO 6940 E ISO 6941	Auto-extinguível

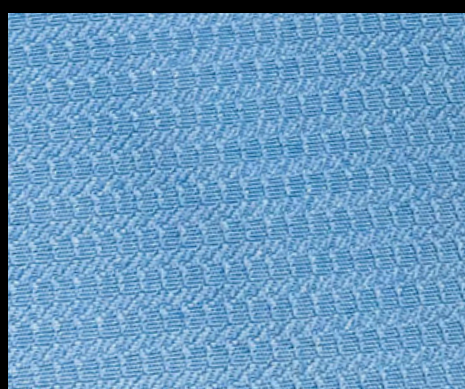
Tratamentos opcionais: repelência a água e óleo, fogo retardante, antimicrobial.



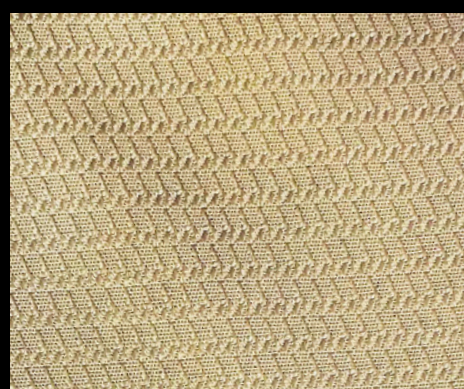
1403



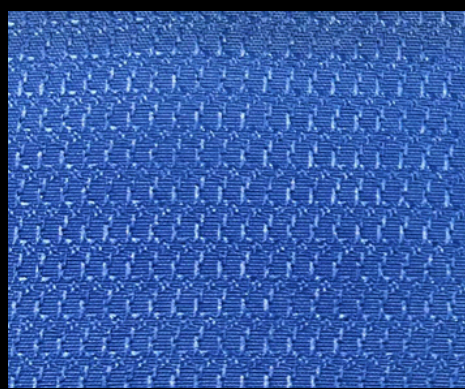
1429



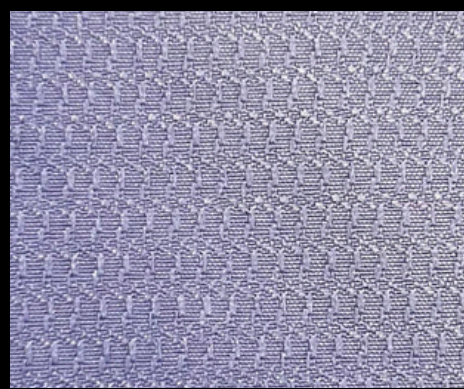
1404



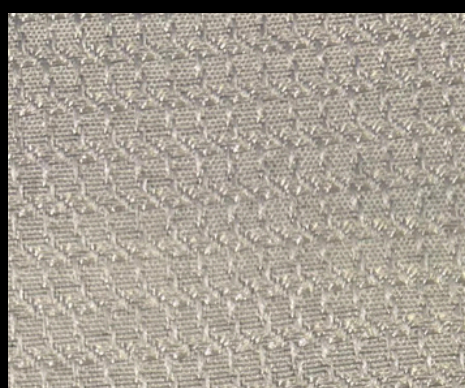
1152



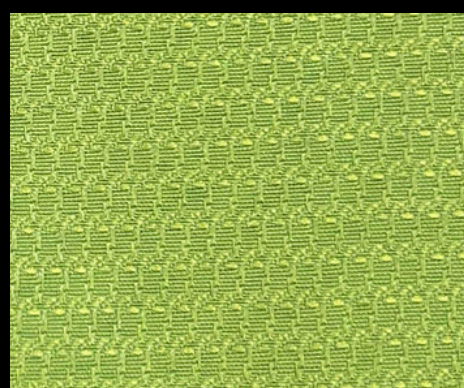
1419



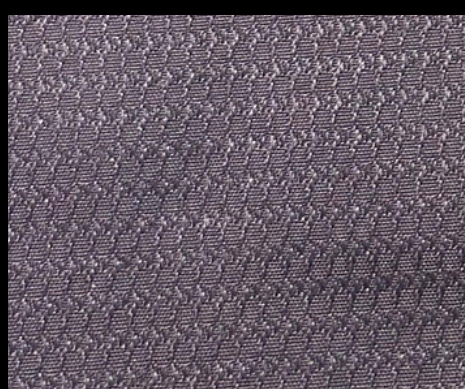
1541



1402



1420



1571



779

*Tons podem variar dentro de tolerâncias comerciais